

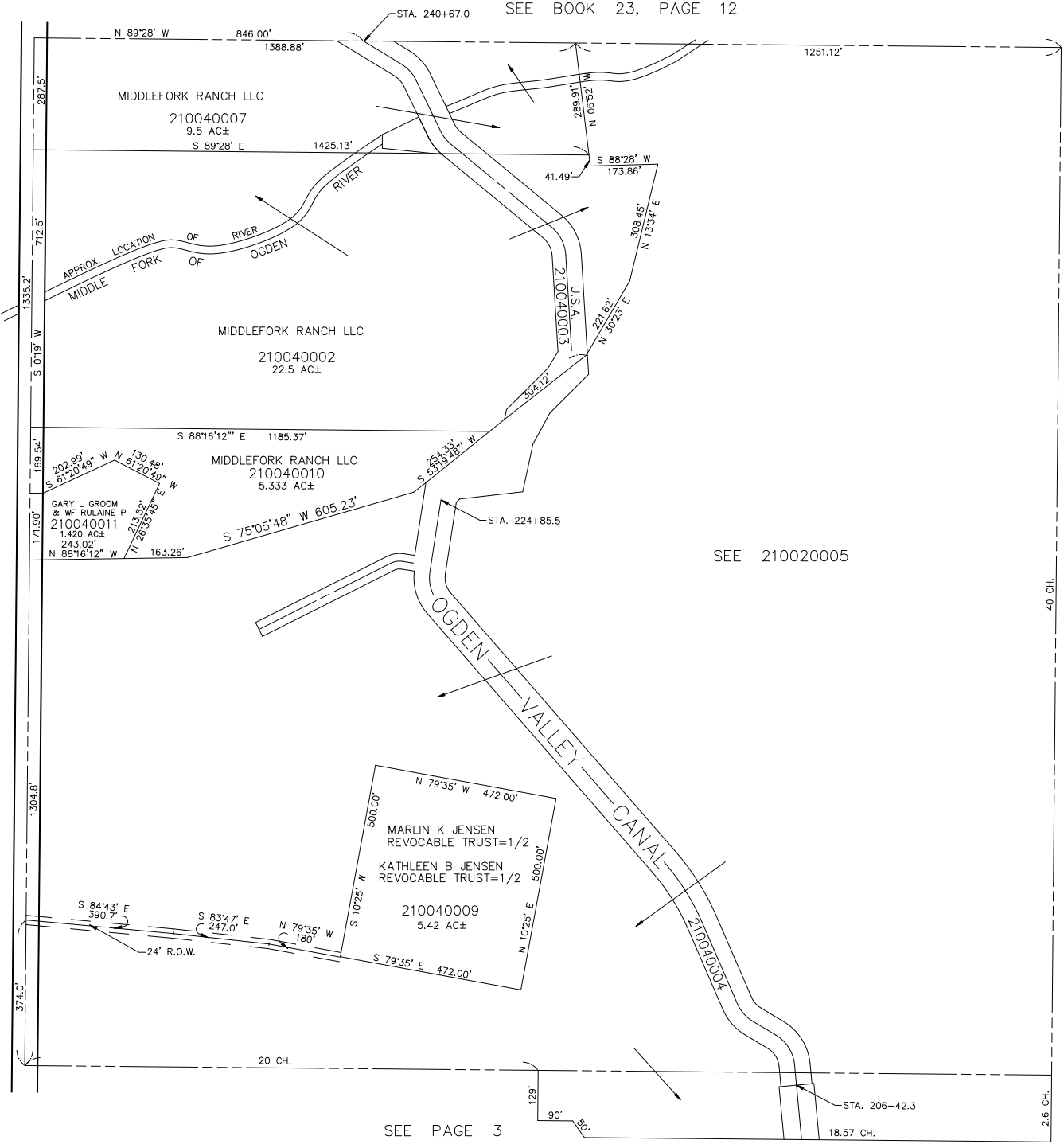
N.W. 1/4  
SECTION 5, T.6N., R.2E., S.L.B.&M.  
IN WEBER COUNTY  
SCALE 1" = 200'

TAXING UNIT: 58

SEE BOOK 23, PAGE 12

SEE PAGE 5

SEE PAGE 2



SEE 210020005

SEE PAGE 3